

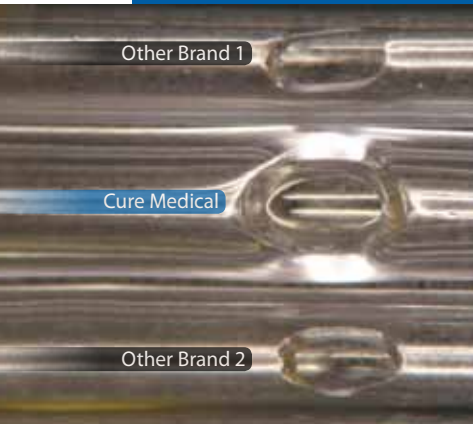
“Only Cure Medical offers exceptional products for a better today while helping to ensure an even brighter tomorrow by **supporting research for a cure** for spinal cord injuries and central nervous system disorders.”



*Bob Yant
Cure Medical founder
and Cure Catheter user*



DISTINCT BENEFITS



Although Cure Medical® intermittent catheters function like others, they offer unique features which translate into benefits that users value.

Polished Eyelets

Cure Medical always uses an ultrasonic process to ensure that all eyelets on all catheters are exceptionally smooth. The difference in eyelet quality between a Cure Medical product and others can be seen – and felt!

“The Cure Medical catheter comes out smooth. I’m sure the polished eyelets are the reason. Others I have used felt like they scraped me.”

Cure Medical product user

High magnification Scanning Electron Microscope (SEM) image of an eyelet on two other national brand catheters and a Cure Medical catheter (center).

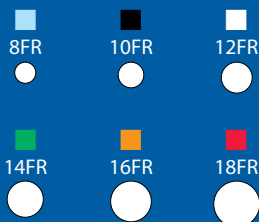
**NOT
MADE WITH
DEHP, BPA
or LATEX**



Many Cure Catheter packages have unique dual openings for increased ease of use.



The coude tip with blue line helps enable proper use.



To aide in product selection, the funnel end color is shown above with the corresponding FR size and outer dimension of the catheter.

Not Made With DEHP, BPA, or Natural Rubber Latex

Supporting research isn’t the only Cure Medical distinction. Material choices and manufacturing processes also set Cure Medical apart from others.

Other manufacturers often use Di(2-ethylhexyl)phthalate (DEHP) as an economical means for making catheters flexible. DEHP is included on a published list of chemicals known to cause cancer and reproductive harm according to the state of California – therefore, Cure Medical products are not made with it.*

Likewise, latex may be in other brand catheters. Natural rubber latex is a chemical which commonly causes irritation and can cause life-threatening allergic reactions – therefore, Cure Medical products are not made with it.

By investing in advanced technology and selecting high quality materials for manufacturing, Cure Medical helps ensure that users experience maximum safety, comfort, and peace of mind.

User Driven Innovations

From product enhancements such as polished eyelets, unique packaging, and a hydrophilic coating option – to a coude tip with blue line and color-coded FR sizes – Cure Medical continually pursues innovations designed to improve the user experience.**

Advancing Medical Research

Only Cure Medical donates 10% of net income to research for a cure for spinal cord injuries and central nervous system disorders. As a result, use of any Cure Medical product helps contribute to a promising future.

* See CA EPA Office of Env. Health Hazard Assessment *List of Chemicals Known to the State to Cause Cancer or Reproductive Toxicity*, Dec. 8, 2006.
** A hydrophilic coating option is available on select Cure Catheter® styles.

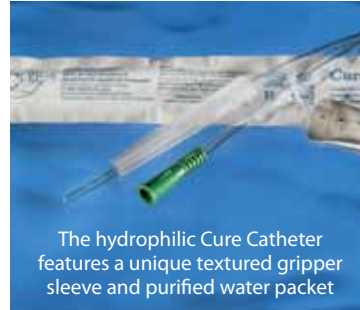
Cure Catheter®



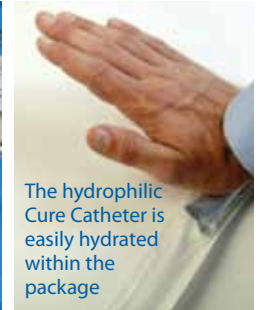
The Cure Catheter is available in a variety of styles



Straight and coude tip options



The hydrophilic Cure Catheter features a unique textured gripper sleeve and purified water packet



The hydrophilic Cure Catheter is easily hydrated within the package

The sterile, single-use Cure Catheter features polished eyelets on a straight or coude tip. The coude tip features the blue line to help ensure comfortable, proper use. The Cure Catheter is offered in male, female, and pediatric lengths. Most male styles are offered uncoated and with a hydrophilic coating. In addition, the package for most styles features unique, dual openings for increased ease of use.

Offered as a case of 300 units (10 boxes of 30).

Male, Uncoated

Part No.	Description	French Size
M8	Male, 16", Straight Tip	8
M10	Male, 16", Straight Tip	10
M10C	Male, 16", Coude Tip	10
M12	Male, 16", Straight Tip	12
M12C	Male, 16", Coude Tip	12
M14	Male, 16", Straight Tip	14
M14C	Male, 16", Coude Tip	14
M16	Male, 16", Straight Tip	16
M16C	Male, 16", Coude Tip	16
M18	Male, 16", Straight Tip	18
M18C	Male, 16", Coude Tip	18

Male, Hydrophilic

Part No.	Description	French Size
HM12	Hydrophilic, Male, 16", Straight Tip	12
HM12C	Hydrophilic, Male, 16", Coude Tip	12
HM14	Hydrophilic, Male, 16", Straight Tip	14
HM14C	Hydrophilic, Male, 16", Coude Tip	14
HM16	Hydrophilic, Male, 16", Straight Tip	16
HM16C	Hydrophilic, Male, 16", Coude Tip	16

Female, Uncoated

Part No.	Description	French Size
F8	Female, 6", Straight Tip	8
F10	Female, 6", Straight Tip	10
F12	Female, 6", Straight Tip	12
F14	Female, 6", Straight Tip	14
F14NC	Female, 6", Straight Tip, No Connector	14
F16	Female, 6", Straight Tip	16
F18	Female, 6", Straight Tip	18

Pediatric, Uncoated

Part No.	Description	French Size
P8	Pediatric, 10", Straight Tip	8
P10	Pediatric, 10", Straight Tip	10
P12	Pediatric, 10", Straight Tip	12
P14	Pediatric, 10", Straight Tip	14

“The Cure Catheter is a superb product. After trying three brands, the Cure Catheter is by far the best.”

Cure Catheter user

DISCREET OPTIONS

Cure Medical® Pocket Catheter



The sterile, single use, U-shaped Cure Medical Pocket Catheter offers men discreet portability by easily fitting in most pant pockets. It is offered with polished eyelets on a straight tip and funnel end in a standard (16”) and an extra long (25”) length. The Cure Medical Pocket Catheter is offered as a single (U); single with lubricant (UL); extra long (XL) with lubricant and gripper sleeve; and in a kit (UK) configuration that includes a nonstaining BZK wipe, one packet of lubricant, ambidextrous gloves, an underpad and a 1500 ml collection bag.

Offered as a case of 300 units (10 boxes of 30).

Part No.	Description	French Size
M12U	Male, 16”, Straight Tip	12
M14U	Male, 16”, Straight Tip	14
M14XL	Male, 25” (Extra Long), Straight Tip	14
M14UL	Male, 16”, Straight Tip with Lubricant	14
M16U	Male, 16”, Straight Tip	16

Offered as a case of 90 units (3 boxes of 30).

Part No.	Description	French Size
M14UK	Male, 16”, Straight Tip, Kit	14

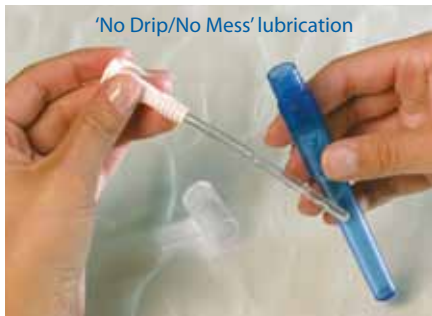
“I like the U-shape Cure Medical Pocket Catheter. I appreciate that it is easy to use.”
Cure Medical Pocket Catheter user

“The Cure Twist is by far the best catheter I have ever used. It is short enough to carry in my purse and long enough to empty my oversized bladder. The lubrication is just enough to do the job. And, the case gives a sanitary way to dispose of in public.”
Cure Twist user

Cure Twist®



Easy twist open top



'No Drip/No Mess' lubrication

The unique, sterile, single use, Cure Twist is the ideal choice for women on the move. The attractive, small package is similar to the design of cosmetics so it is preferred by women who value discretion and convenience.

Other Cure Twist features include an easy, twist open top and polished eyelets on a pre-lubricated straight tip that allows for 'No Drip/No Mess' cathing. It is offered with a universal funnel end for maximum compatibility with drainage solutions.

Offered as a case of 300 units (10 boxes of 30).

Part No.	Description	French Size
T8	Female, 6", Straight Tip	8
T10	Female, 6", Straight Tip	10
T12	Female, 6", Straight Tip	12
T14	Female, 6", Straight Tip	14
T16	Female, 6", Straight Tip	16

Cure Ultra™



The sterile, single use Cure Ultra is a ready to use catheter for women. The small package features an easy tear top and enables disposal of minimal material. The Cure Ultra has polished eyelets on a pre-lubricated straight tip and a unique, 'No Roll' connector/funnel end for secure, clean, confident use.

Offered as a case of 300 units (10 boxes of 30).

Part No.	Description	French Size
ULTRA8	Female, 6", Straight Tip	8
ULTRA10	Female, 6", Straight Tip	10
ULTRA12	Female, 6", Straight Tip	12
ULTRA14	Female, 6", Straight Tip	14
ULTRA16	Female, 6", Straight Tip	16

“I was given samples of various brands (of catheters) by my doctor ... I use the Cure Catheter and they are the best. Thank you very much!” Cure Catheter user

“I am using catheters from Cure Medical. I like them and will continue using them. I also like the contribution to research.” Cure Medical product user

CATH IN A BAG

Cure Catheter® Closed System



The Cure Catheter Closed System is offered as a single (above) and as a kit (right)



A pull ring and finger hole increase ease of use



Coude and straight tip options

The sterile, single-use, unisex Cure Catheter Closed System features polished eyelets on a pre-lubricated catheter tip with integrated 1500 ml collection bag. It is offered in a single and kit configuration. The kit includes the Cure Catheter Closed System, a nonstaining BZK wipe, povidone-iodine swabsticks, ambidextrous gloves, gauze wipe, and an underpad.

Offered as a case of 100 units.

Part No.	Description	French Size
CB8	Closed System Single, Straight Tip	8
CB10	Closed System Single, Straight Tip	10
CB12	Closed System Single, Straight Tip	12
CB14	Closed System Single, Straight Tip	14
CB16	Closed System Single, Straight Tip	16
CS8	Closed System Kit, Straight Tip	8
CS10	Closed System Kit, Straight Tip	10
CS12	Closed System Kit, Straight Tip	12
CS14	Closed System Kit, Straight Tip	14
CS14C	Closed System Kit, Coude Tip	14
CS16	Closed System Kit, Straight Tip	16

“These are the nicest catheters I have ever used.” *Cure Medical product user*

“I use the Cure Catheter. I love the idea that research is done.” *Cure Catheter user*

“The Cure Catheter is easier to use and draining is more complete. Thank you for everything you do.” *Cure Catheter user*

Cure Medical® Catheter Insertion Kit



K1



K2-90



K2-100

When combined with a catheter (not included), the sterile, single-use, unisex Cure Medical Catheter Insertion Kit is an alternative to using a complete Closed System product. The kits include a nonstaining BZK wipe, one packet of lubricant, ambidextrous gloves, and an underpad. Additionally, the K1 includes a resealable disposal bag and the K2 styles include a 1500 ml collection bag with a universal connector.

Offered as a case of 100 units.

Part No.	Description
K1	Insertion Kit with resealable disposal bag

Offered as a case of 90 units.

Part No.	Description
K2-90	Insertion Kit with universal connector on a 1500 ml collection bag

Offered as a case of 100 units.

K2-100	Insertion Kit with universal connector on a 1500 ml collection bag
--------	--

Cure Medical® Extension Tube



The non-sterile, flexible Cure Medical Extension Tube easily connects to any catheter to facilitate draining.

Offered as a case of 30 units.

Part No.	Description
ET1	29" tube



Better today. Brighter tomorrow.

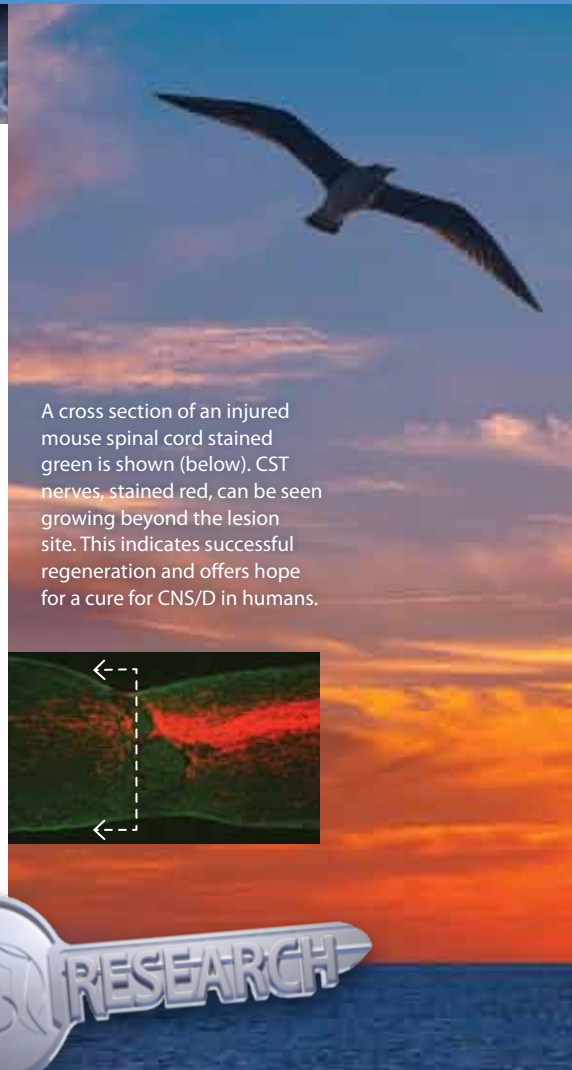
Cure Medical products not only offer premium features which translate into benefits that users immediately experience and value – they also contribute to a brighter future.

The Cure Commitment

Cure Medical has made an unsurpassed Cure Commitment to donate 10% of net income to multiple medical research facilities nationwide in pursuit of a cure for spinal cord injuries and central nervous system disorders.

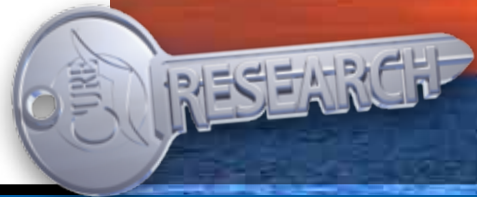
Making a Difference

Several of the research centers that Cure Medical proudly supports have already achieved a breakthrough in regeneration in the corticospinal tract. For information on this and other advances in medical science, visit www.curemedical.com.



A cross section of an injured mouse spinal cord stained green is shown (below). CST nerves, stained red, can be seen growing beyond the lesion site. This indicates successful regeneration and offers hope for a cure for CNS/D in humans.

Research is the key.



“Cure Medical donates 10% of net income to research in pursuit of a cure for spinal cord injuries and central nervous system disorders. This commitment, combined with your regular use of Cure Medical products, enables the most significant benefit possible – the potential for a cure.”

Bob Yant, Cure Medical founder



Cure Medical
3700 Newport Blvd., Suite 301
Newport Beach, CA 92663

phone 800.570.1778 or 949.723.0364
fax 949.723.0564
www.curemedical.com

Like us on Facebook



June 2016 • 900.045 - H